



**Mega Exzenter ø15 mm, Zinkdruckguß mit Universalkopf**  
**Mega zinc cam 15 mm, zinc diecast, slotted and hex**

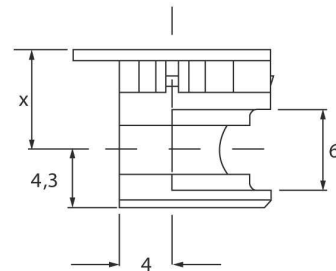
Plattenstärke: 15, 16, 18, 19, 23 mm  
 Panel thickness: 15, 16, 18, 19, 23 mm

**Beschreibung**

- funktioniert nach dem linearen, zentrischem Prinzip
- Anzugsweg: 4 mm
- Heranholweg: 2 mm
- Spannweg: 2 mm
- kein Plattenversatz beim Anzug
- geeignet für alle handelsüblichen Dübel

**features**

- works on a linear centric principle
- the cam pull the dowel up to 4 mm
- avoiding panel shifting (none fewer wooden dowels necessary)
- the cam does not tilt when used
- works also with most common dowels



Gehäuse ø15 / housing ø15					
Artikel-Nr. order-no.	Plattenstärke Panel thickness	Maß X measure X	Beschreibung specification	Oberfläche surface	VE PU
<b>D01060</b>	<b>15/16</b>	7,7	ohne Rand/ without rim	Nickel/nickel plated	200
<b>D01061</b>	<b>15/16</b>	7,7	mit Rand/ with rim	Nickel/nickel plated	200
<b>D01062</b>	<b>18/19</b>	9,2	ohne Rand/ without rim	Nickel/nickel plated	200
<b>D01063</b>	<b>18/19</b>	9,2	mit Rand/ with rim	Nickel/nickel plated	200

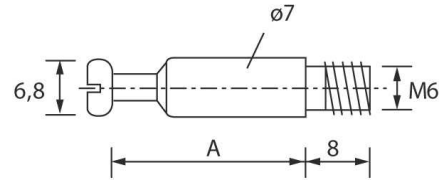
**Hinweis / Please advice**

Alle Abmessungen in mm / All dimensions in mm

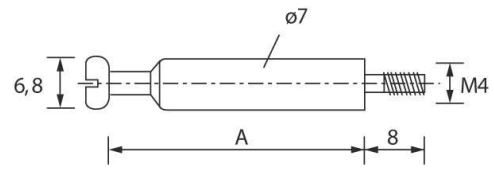


**Mega Exzenter Einschraubdübel  $\varnothing 7$  mm, Stahl**

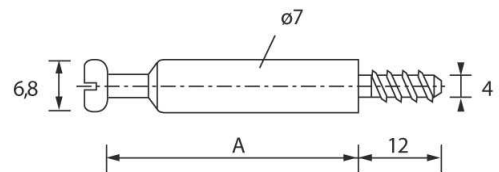
**Mega cam steel dowel  $\varnothing 7$  mm, steel**



Einschraubdübel <b>M6</b> / steeldowel M6				
Artikel-Nr. order-no.	Oberfläche surface	A	Gewinde screw thread	VE PU
<b>D01070</b>	blank/plain	20,0	M6 x 8	200
<b>D01071</b>	blank/plain	24,0	M6 x 8	200
<b>D01072</b>	blank/plain	30,0	M6 x 8	200



Einschraubdübel <b>M4</b> / steeldowel M4				
Artikel-Nr. order-no.	Oberfläche surface	A	Gewinde screw thread	VE PU
<b>D01073</b>	blank/plain	20,0	M4 x 8	200
<b>D01074</b>	blank/plain	24,0	M4 x 8	200
<b>D01075</b>	blank/plain	30,0	M4 x 8	200



Einschraubdübel <b>Holzgewinde <math>\varnothing 4</math></b> / steeldowel with wood screw thread $\varnothing 4$				
Artikel-Nr. order-no.	Oberfläche surface	A	Gewinde screw thread	VE PU
<b>D01076</b>	verzinkt/zinc plated	20,0	Holzgewinde/wood screw	200
<b>D01077</b>	verzinkt/zinc plated	24,0	Holzgewinde/wood screw	200
<b>D01078</b>	verzinkt/zinc plated	30,0	Holzgewinde/wood screw	200

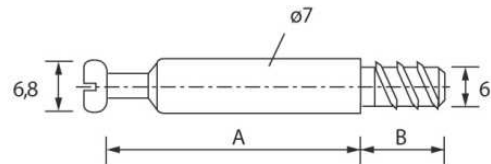
**Hinweis / Please advice**

Alle Abmessungen in mm / All dimensions in mm



**Mega Exzenter Einschraubdübel ø7 mm, Stahl**

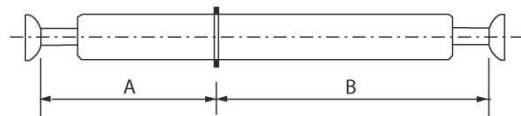
**Mega cam steel dowel ø7 mm, steel**



Einschraubdübel <b>EURO-Gewinde</b> / steeldowel with EURO thread					
Artikel-Nr. order-no.	Oberfläche surface	A	Gewinde screw thread	VE	PU
<b>D01079</b>	verzinkt/zinc plated	20,0	ø6 x 8	200	
<b>D01080</b>	verzinkt/zinc plated	24,0	ø6 x 8	200	
<b>D01081</b>	verzinkt/zinc plated	30,0	ø6 x 8	200	
<b>D01082</b>	verzinkt/zinc plated	20,0	ø6 x 11	200	
<b>D01083</b>	verzinkt/zinc plated	24,0	ø6 x 11	200	
<b>D01084</b>	verzinkt/zinc plated	30,0	ø6 x 11	200	

**Hinweis / Please advice**

EURO-Direkt-Gewinde für Bohrung ø5 mm / EURO-thread for ø5 mm holes



Mittelwanddübel mit Ring / centre panel bolts with ring						
Artikel-Nr. order-no.	Oberfläche surface	A	B	Plattenstärke panel thickness	VE	PU
<b>D01086</b>	verzinkt/zinc plated	20,0	36,0	16	50	
<b>D01087</b>	verzinkt/zinc plated	30,0	46,0	16	50	
<b>D01088</b>	verzinkt/zinc plated	20,0	39,0	19	50	
<b>D01089</b>	verzinkt/zinc plated	30,0	49,0	19	50	

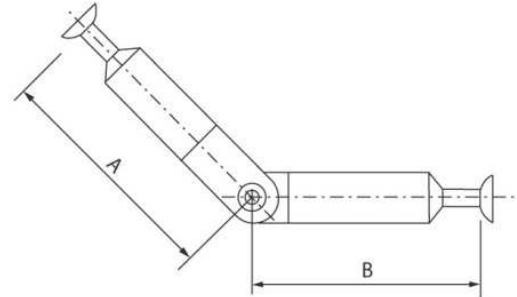
**Hinweis / Please advice**

Alle Abmessungen in mm / All dimensions in mm

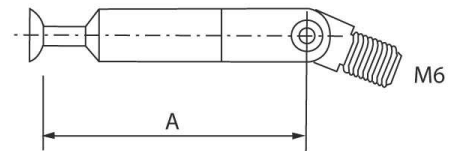


**Mega Exzenter Gehrungsverbinder  $\varnothing 7$  mm, Stahl**

**Mega cam angled dowel  $\varnothing 7$  mm, steel**



Gehrungsdübel <b>zweifach</b> / angled dowel double				
Artikel-Nr. order-no.	Oberfläche surface	A	B	VE PU
<b>D01090</b>	verzinkt/zinc plated	40,0	40,0	50



Gehrungsdübel <b>einfach</b> / angled dowel single			
Artikel-Nr. order-no.	Oberfläche surface	A	VE PU
<b>D01091</b>	verzinkt/zinc plated	40,0	50

**Hinweis / Please advice**

Alle Abmessungen in mm / All dimensions in mm